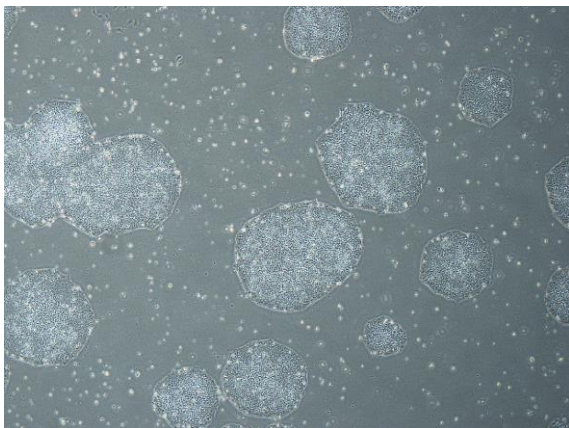
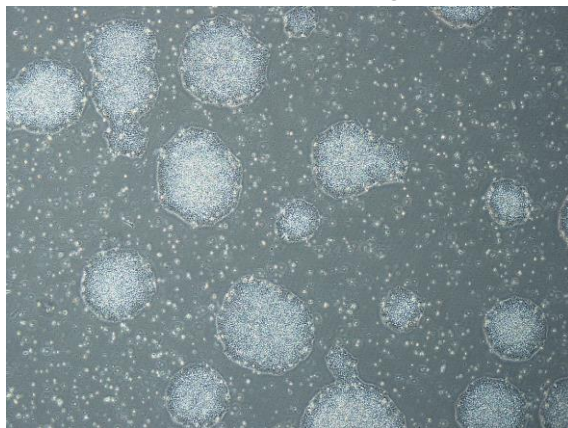


【 CiRA-j-1107 】 Morphology of iPSC colonies

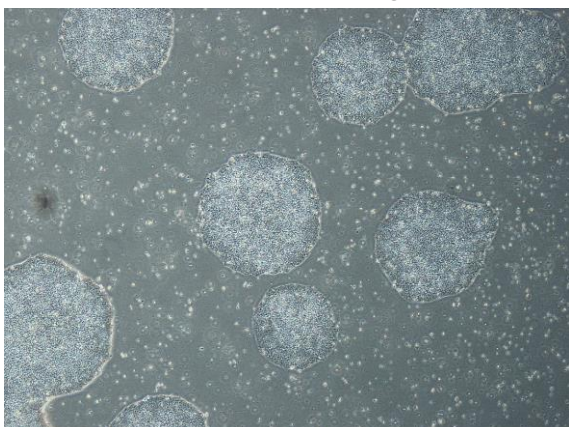
CiRA-j-1107-A: passage-3



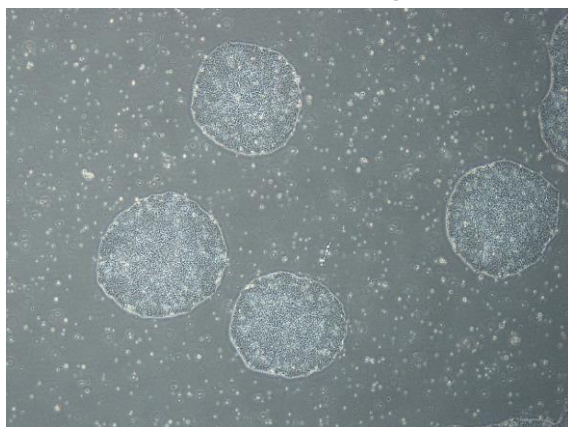
CiRA-j-1107-B: passage-3



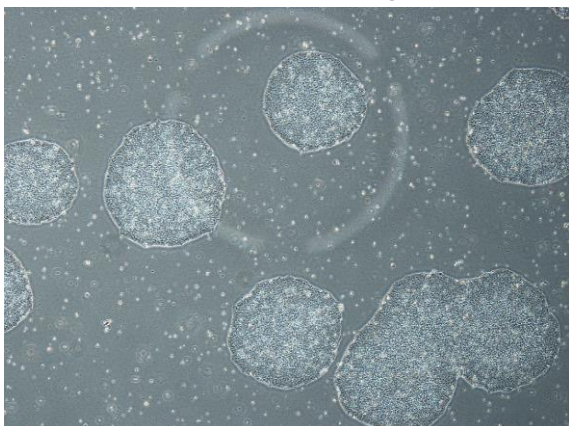
CiRA-j-1107-C: passage-3



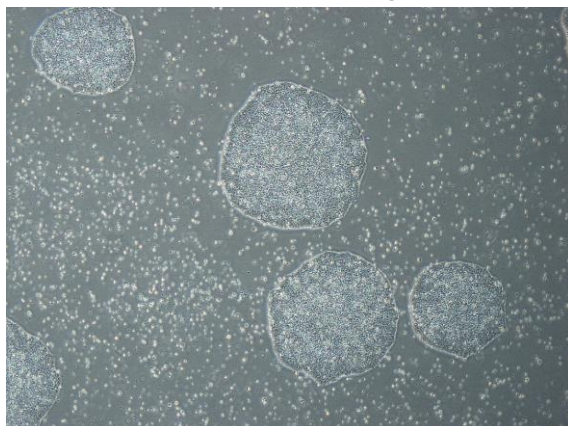
CiRA-j-1107-D: passage-3



CiRA-j-1107-E: passage-3



CiRA-j-1107-F: passage-3



(All images were captured at 4x magnification)